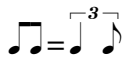


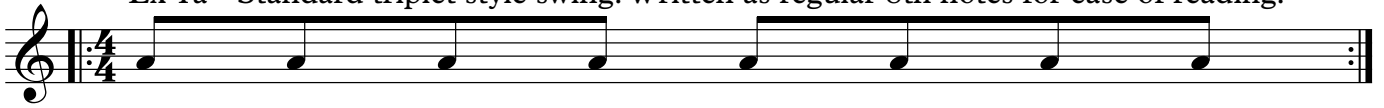
Swing Placement Ideas

♩ = 100

Ewan Gibson



Ex 1a - Standard triplet style swing. Written as regular 8th notes for ease of reading.



Richard Kass explained in the masterclass that swing can be understood in terms of each beat being divided in to two and that the first note must be longer than the second. He added that while swing can vary, and most musicians will explain this a 'feel' thing, in reality the rhythm can be calculated precisely based on various subdivisions. The first example below divides each beat in 3 and is what everyone reading this will recognise as swing or shuffle.

2 Ex 1b - What you are really playing in the example above.



The following 3 examples demonstrate some of the possible variations using this concept. If you relate everything back to the standard triplet version in Ex 1b you will see how the swung note falls either slightly earlier or later than normal. Using other groupings and subdivisions will give you different 'feels' that you may already be using in your playing. Practicing this method will give you the ability to execute any feel you require without the need to guess each time.

3 Ex 2 - Swing using quintuplets split as a group of 3 and 2. So you play on 1 and 4.



4 Ex3a - This example utilises septuplets grouped as a 4 and a 3.



5 Ex3b - This example utilises septuplets grouped as a 5 and a 2.

